

KNM X SERIES



KAPP NILES

Stationary measuring machines resp. in docking design for spur and helical gears, bevel gears, gear tools, shafts, bearing rings etc.

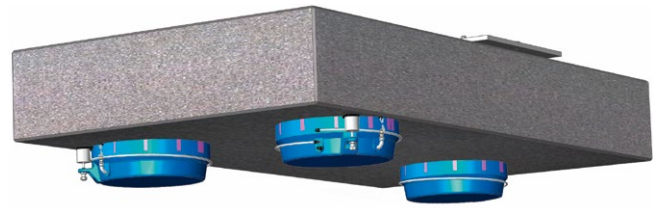


With KNM X series, KAPP NILES Metrology GmbH - manufacturer of the currently largest gear measuring machines (stationary or transportable) in the world - offers customized stationary state-of-the-art measuring machines as well as docking station solutions (machine base with rotary table and portable 3-axes-measuring unit).

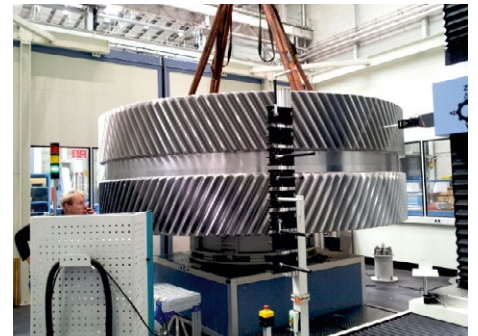
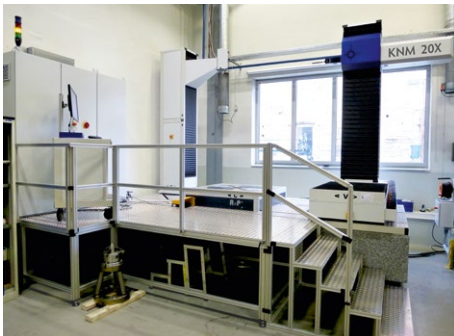
**Ultimate high precise measurement
of medium and large size gears in the lab
or on the shop floor - no foundation required**

Highlights of high precise KNM X:

- machine structure with outstanding intrinsic accuracy
- large bearing distances of guides
- inherently stable granite machine base on active damp-ers to absorb vibrations → **no foundation re-quired**
- drive system close to centre of gravity
- linear motors in X-, Y-, Z- measuring axes
- high precision air- or hydrostatic bearing rotary tables (diameters from 500 to 1,800 mm) with direct drive and through hole



- motorized positioning of measuring column (V-axis) to the actual workpiece diameter
- laser based system for safe operation



type	workpiece diameter [mm]	measurable vertical height [mm]	number of axes	max. weight of workpiece [daN]
KNM X series*	0 - 6,000	1,000 - 2,100	3 + 1 4 + 1	1,500 - 40,000

* customised design